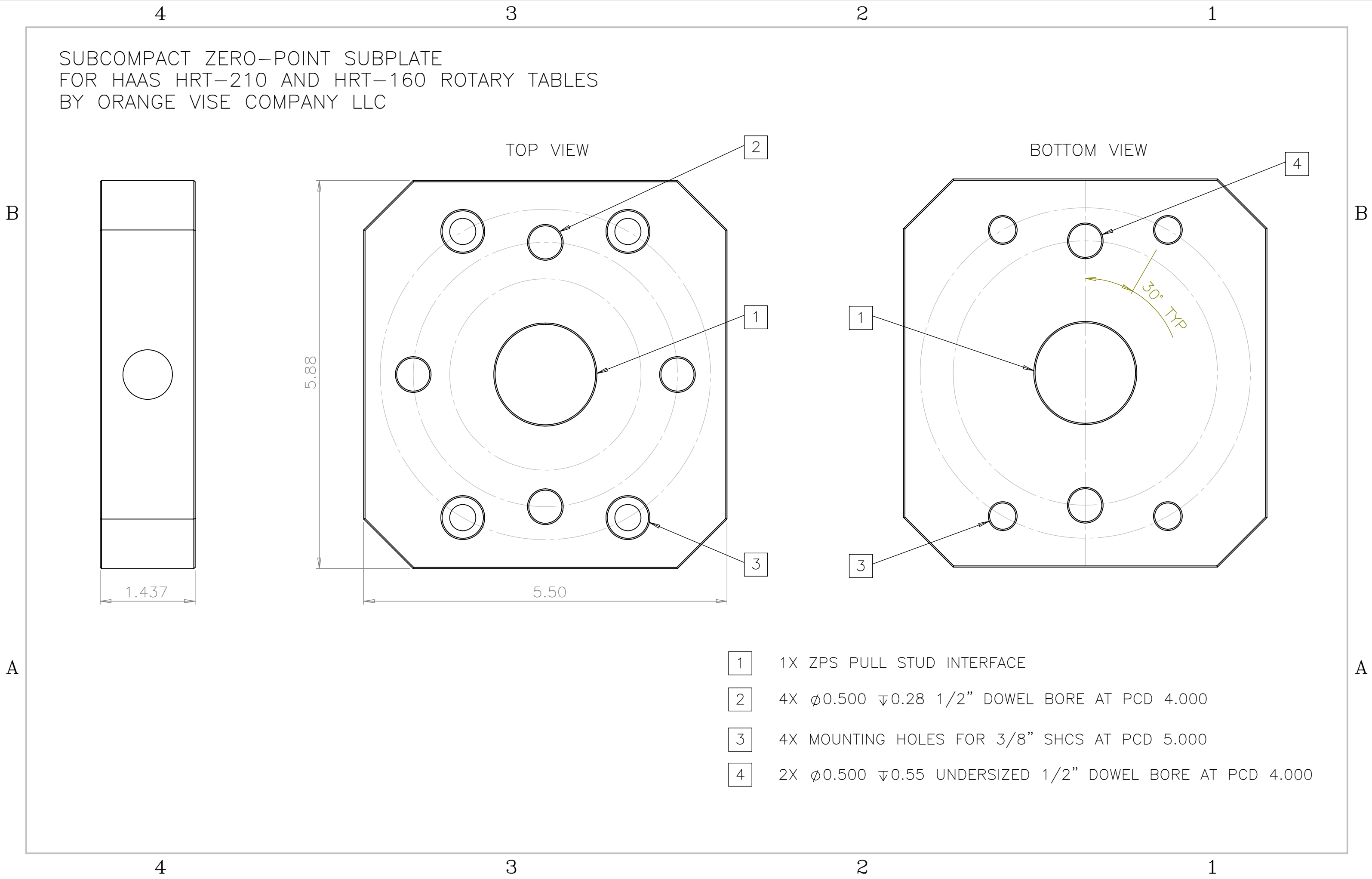


SUBCOMPACT ZERO-POINT SUBPLATE
 FOR HAAS HRT-210 AND HRT-160 ROTARY TABLES
 BY ORANGE VISE COMPANY LLC



- 1 1X ZPS PULL STUD INTERFACE
- 2 4X $\phi 0.500 \mp 0.28$ 1/2" DOWEL BORE AT PCD 4.000
- 3 4X MOUNTING HOLES FOR 3/8" SHCS AT PCD 5.000
- 4 2X $\phi 0.500 \mp 0.55$ UNDERSIZED 1/2" DOWEL BORE AT PCD 4.000