

4

3

2

1

HAAS HRT160 / TR160 (T-SLOTTED PLATTER) MOUNTING OPTION
 FOR DELTA IV COMPACT VISE
 BY ORANGE VISE COMPANY LLC

TOP VIEW

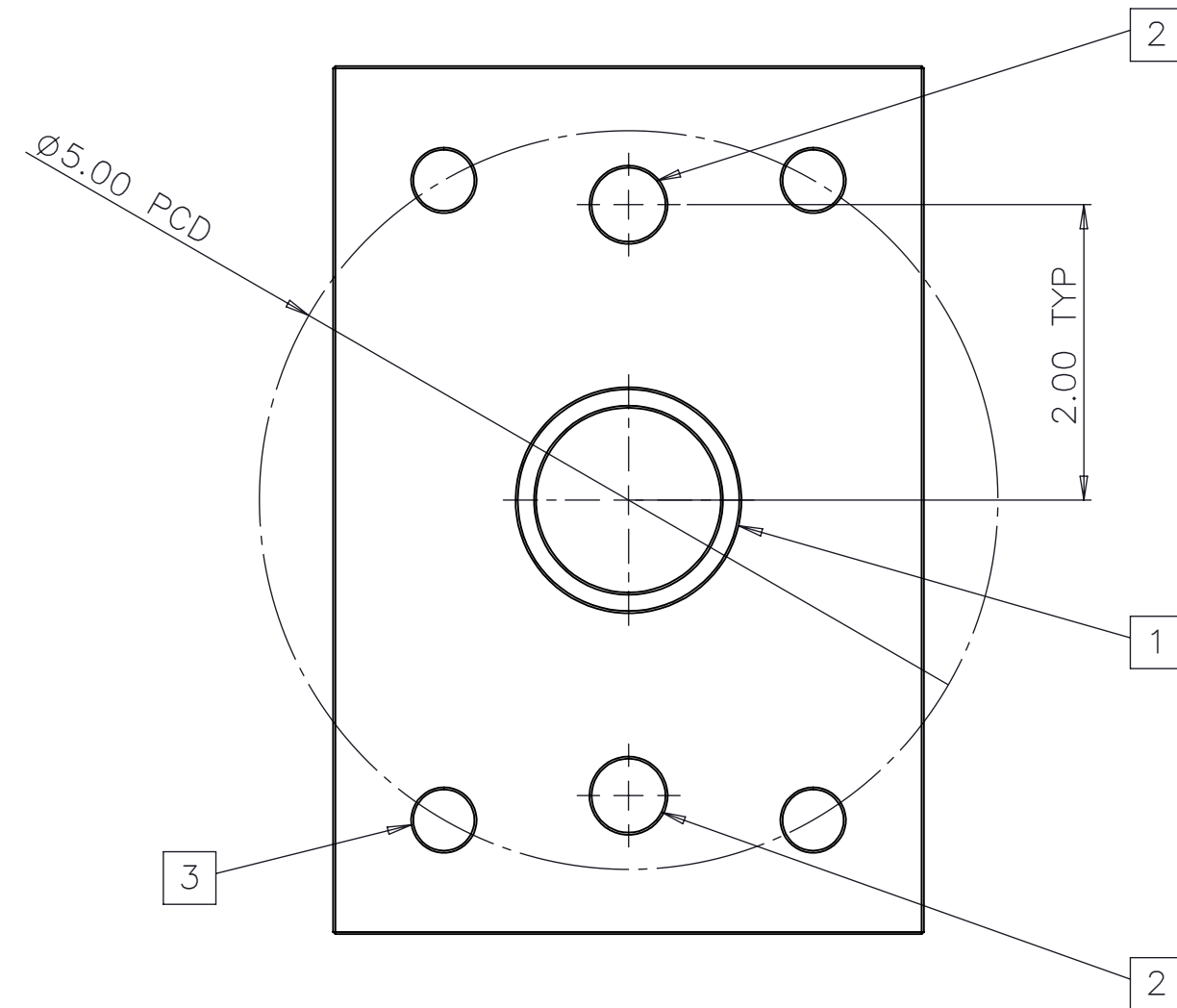
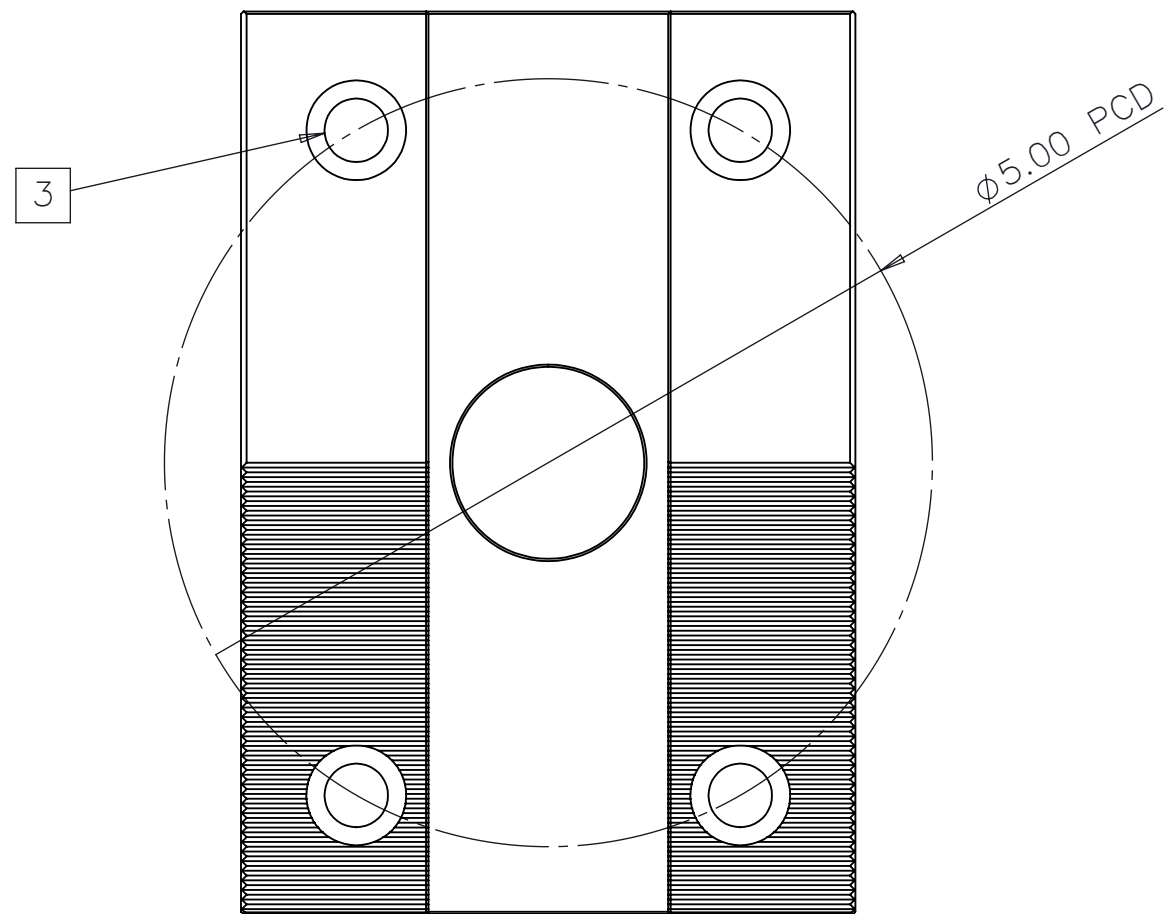
BOTTOM VIEW

B

B

A

A



- 1 1X BALL COUPLER INTERFACE
- 2 2X ø0.5001 ∇ 0.55 BORES FOR ø0.4993" UNDERSIZED DOWELS
- 3 4X 3/8" OR M10 ∇ THRU MOUNTING HOLES



4

3

2

1